

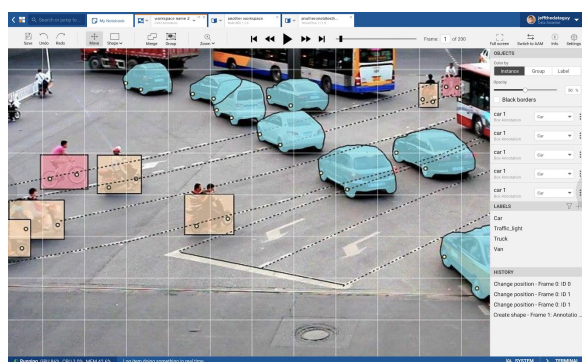
CVAT for Data Labeling

AI/ML Model Management

HQ Location: San Francisco, USA

Principals: Rush Tehrani, Donald Scott

Company Size: 10+



Onepanel is a Kubernetes-native, portable, modular and extensible workflow and infrastructure automation platform for AI. Out of the box, it allows developers and data scientists to quickly build, train, deploy and collaborate on deep learning workflows in a highly scalable and reproducible environment that supports CPU and GPU hardware. Because Onepanel is extensible and its resources are Kubernetes-native, these workflows can be further customized to include any specialized tools.

Companies are struggling with the infrastructure needed to quickly and easily build, train, deploy and scale production-ready AI applications. With Onepanel's infrastructure and workflow automation capabilities combined with CloudFactory's workforce, any company is able to support company-wide AI initiatives at the scale of Tesla, Waymo and Facebook.

Interested in learning more about this solution?

Contact CloudFactory via email:
cfsolutions@cloudfactory.com